

# Safer North West Leicestershire Community Safety Partnership plan 2017-2020



*Working together to make North West Leicestershire a safer  
place for residents, communities, businesses and visitors*



**As Chair of the Safer North West Community Safety Partnership I am pleased to introduce the Community Safety Strategy 2017-2020. I hope this document helps you to understand what the partnership does and how we deliver against our priorities.**

Over the past three years I am pleased to report that by working together we have constantly reduced crime and helped to make North West Leicestershire a safer place to live, work and visit. There have been some difficult challenges and on occasion some tragic cases. These events caused us to review our processes and to work harder to improve our responses to new and emerging trends and cases.

Our colleagues from Leicestershire Police, Leicestershire Fire and Rescue Service and other partner agencies have all been subject to budget cuts and reductions in staffing levels. Despite this, we have continued to improve the safety of this district and in the last three years we have achieved great successes and delivered innovative projects to support residents, including drama presentations, films and roadshows.

Our challenge is to see continued reductions over the next three years. We hope to achieve this by working smarter and continuing to explore new ways of working. Change is becoming a constant for us in the UK and North West Leicestershire is no different. We have experienced the changing face of crime and we are responding to it. We are keen to face these new challenges for the next three years working with partners including Probation and the National Health Service. Whilst some things are outside of our control, we will continue to actively engage with new and existing organisations and services.

Our main focus will continue to be our core role of reducing crime, however, alongside this we also have a responsibility to prevent crime and disorder, tackle the misuse of substances and reduce reoffending. In 2015 we gained an added duty to support the PREVENT strategy helping our young and vulnerable people from being drawn into extremist behaviour. We will work together to identify and deal with the perpetrators who wish to harm our community and we will support their victims.

Crime is changing, so we are adapting. We are pleased that crimes, such as burglary and theft offenses have reduced, but new crimes, such as cybercrime, modern day slavery, child sexual exploitation and historic abuse claims are becoming the new challenges for us and we need to respond quickly and effectively. This has led to the development of new tools, projects and the training of staff. This work is well underway and we have already started to deliver against some of these crimes.

We will not forget the other crime types and we plan to respond to identified hotspots and spikes in crime. We will continue to support the victims of anti-social behaviour and we aim to attend public events to talk to you and listen to your concerns around crime.

In order to ensure we are transparent and accessible we will publish our annual priorities and increase the publication of other useful information including community triggers, domestic homicide reviews and information about NWLDC CCTV.

Our aim is to continue to make our district a stronger and safer place to be and I am confident that with your help we will improve the quality of life for those that live, work and visit North West Leicestershire.

**Councillor Trevor Pendleton**

**Portfolio holder for Regeneration and Planning, North West Leicestershire District Council  
Chair of the Safer North West Leicestershire Partnership**

# Introduction

**North West Leicestershire is located in the heart of the Midlands and has a number of unique characteristics which bring their own community safety considerations. The district is home to East Midlands Airport and Donington Park race circuit in the north and is part of the National Forest. There are also stretches of the M1 motorway and other major commuter routes passing through the district.**



© Burrows Communications Ltd. [www.burrows.co.uk](http://www.burrows.co.uk)

Recent years have seen huge changes to the area. Moving away from a heavy industrial base, whilst still retaining some iconic sites such as the quarries, towards a smaller industrial and distribution based economy. We have seen growth not only of the National Forest, but of housing, business developments and the former mining communities. This presents us with the challenges that growth brings, but also opportunities to improve our communities as a whole. We have seen a growth in facilities for young people, community venues and better opportunities emerging for all, but also a reduction in youth workers and trained staff to take advantage of the new faculties. The new developments brings with it community funding and the opportunity to add to the already diverse mix of community resources.

Our vision for the Safer North West Partnership is to protect North West Leicestershire's residents, communities, businesses and visitors from crime and disorder which may cause them harm. The changing face of crime presents us with fresh challenges. Whilst we have seen reductions in traditional crime types, such as burglary and theft, we have also a seen rise of new crime types including cyber enabled crime and child sexual exploitation as well domestic and international terrorism driven by ideology. This presents new questions and means we need to look a new ways of working.

# What is the Safer North West Leicestershire Community Safety Partnership?

---

Community safety is a broad term used to describe the protection of our communities from the threat of crime or anti-social behaviour. The Community Safer Partnership Strategic Group works to identify where crime and disorder has or may occur and puts measures in place to try to address it. The Partnership understands that the consequences of becoming a victim of crime or anti-social behaviour can be far-reaching and have a devastating impact. Since their introduction, community safety partnerships have encouraged a more inclusive way of working which has contributed to a sustained fall in crime. The 1998 Crime and Disorder Act required Crime and Disorder Reduction Partnerships (now named Community Safety Partnerships) be set up and placed an obligation on local authorities and police to work together to tackle crime and disorder in their area. Since this time further legislation has expanded the remit of the partnership and made more organisations, such as clinical commissioning groups, also accountable for community safety.

Section 17 of the Crime and Disorder Act 1998, (amended by the Police and Justice Act 2006) requires responsible authorities to consider crime and disorder and the misuse of drugs, alcohol and other substances in the exercise of all their duties, activities and decisions. This means that in all strategies and service delivery by statutory agencies, including district councils, county councils and the police, there is a need to consider the likely impact on crime and disorder throughout their work. Since their introduction in 2012, Police and Crime Commissioners (PCCs) have played an important role in community safety. The Safer North West Partnership has worked hard over recent years to build a good relationship with Leicestershire's PCC, and the office of Police and Crime Commissioner.

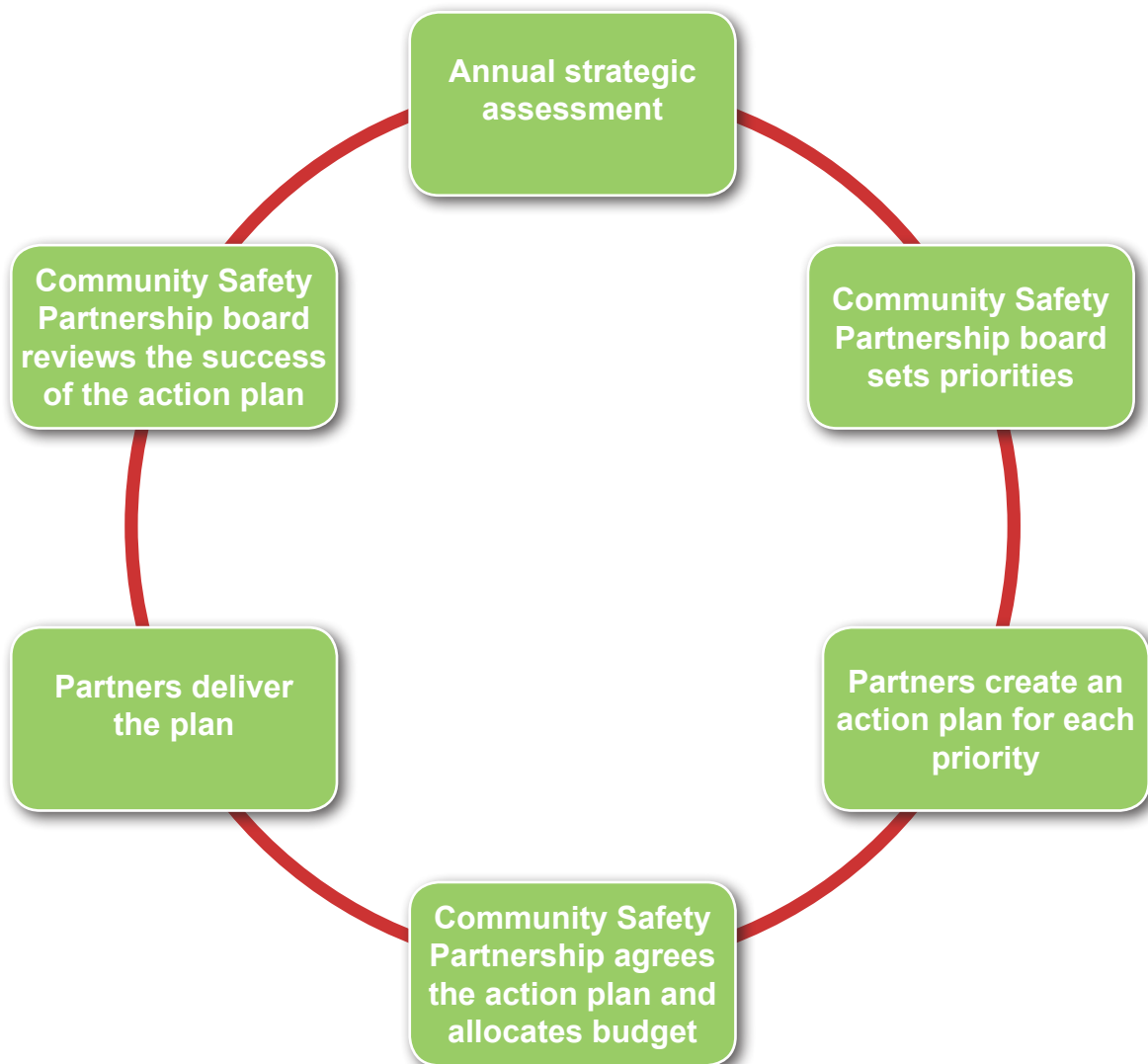
The Safer North West Partnership brings together a number of agencies with a shared commitment to reducing crime and disorder in the district. By working together we are greater than the sum of our parts, offering better value from money and a more joined up approach. The Partnership is made up of a number of organisations including;

- North West Leicestershire District Council
- Leicestershire County Council
- Office of the Police and Crime Commissioner
- Leicestershire Police
- National Probation Service
- Local Community Rehabilitation Company
- West Leicestershire Clinical Commissioning Group
- Leicestershire Fire and Rescue Service.

These statutory agencies in the Partnership work closely with other organisations such as social housing providers, youth offending service, drug and alcohol support services, local business, youth groups and voluntary agencies amongst others. The Safer North West Partnership aims to bring together people and organisations that are committed to having an impact on crime and disorder in our local communities. By working together we can ensure that agencies are not working in isolation and that resources are targeted effectively where they are needed.

Every three years each community safety partnership is required by law to produce a plan. This sets out our approach to community safety. Each year we conduct a strategic assessment into the current trends of crime in North West Leicestershire as well as county wide, nationally and increasingly internationally. This assessment assists in enabling us to set our annual priorities and then, in partnership with front line staff, we create our annual action plan. We will publish the priorities every year, along with our plan to tackle these priorities.

As a result, strong links have developed with support services and enforcement agencies to ensure that appropriate and timely referrals are made for both victims and perpetrators.



Whilst most crime types are put through strategic assessment, some types are mandatory for us to address. These are:

- Reducing reoffending
- Substance misuse (such as drugs and alcohol)

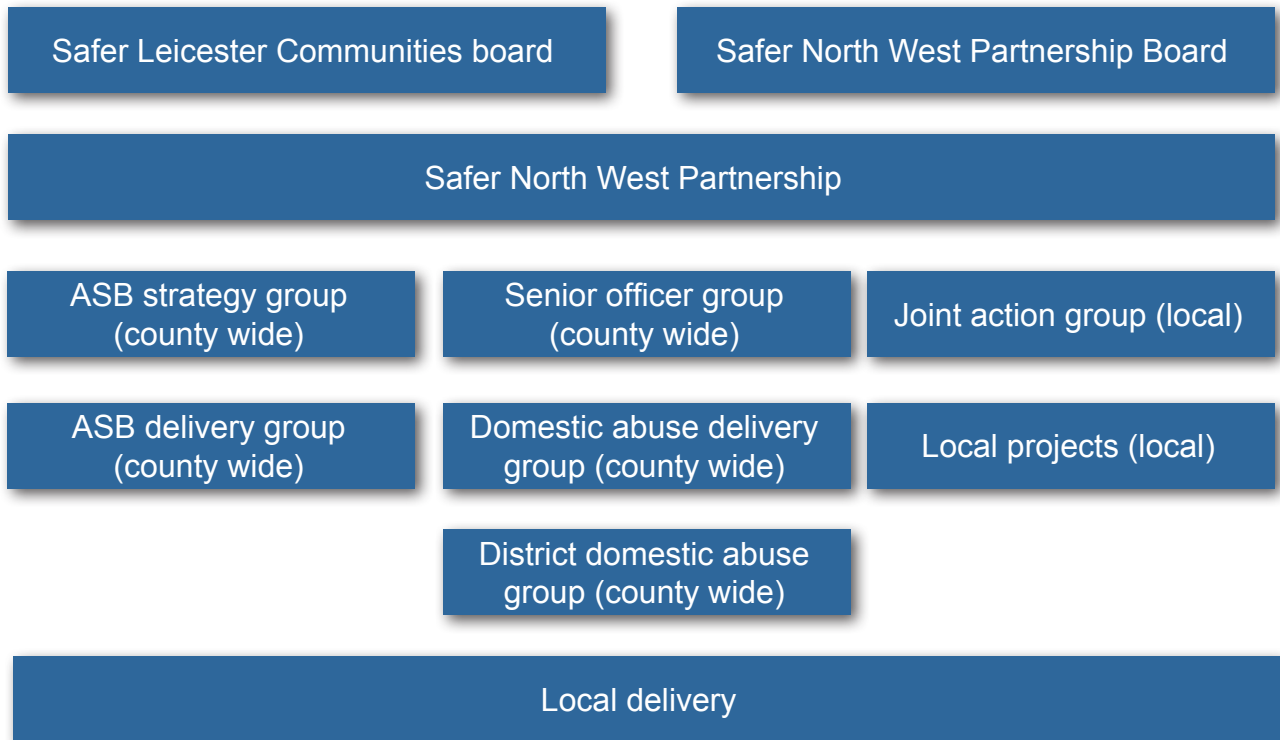
We will always have plans to address these and we support county wide groups that all share the same statutory priorities. This link helps us to ensure that if you live in Leicestershire, you can expect similar levels of service.

Our strategic themes, that are reflected in every action plan that we deliver are

- To make our community safer for residents, communities, business and visitors
- To support and protect all those who are vulnerable within our community
- To work in partnership to achieve better value in what we deliver to residents, communities, business and visitors.

# Delivery of crime reduction

**We deliver our actions in partnership. No single organisation leads on any particular action plan as we all have our part to play. We develop and deliver all the plans as a partnership, leading to a multi-faceted approach to reducing crime and disorder. We run or support a number of groups, delivering across a wide range of crime types, but our actions are public facing. It is our aim that the community, business and visitors come to recognise the partnership and feel the difference we make.**



Our approach is always to support people away from crime and to prevent people from becoming victims in the first place, but when this is not possible, we use any powers available to us from civil warnings up to and including the full weight of the law. We support the countywide incremental approach to reducing anti-social behaviour and we support Leicestershire Police's harm reduction approach to crime reduction.

Our interventions in the past have included:

- Support for domestic abuse forums
- CCTV provided across the district by NWLDC
- Crime reduction roadshows at large events, such as Download festival
- Support for national events such as hate crime awareness week
- Youth interventions and diversionary activities funded through the PCC
- Instructing the use of civil injunctions through the courts.

Alongside traditional crime reduction projects. We support other groups, such as Facewatch, Shop Watch and Neighbourhood Watch. We also support the door staff in Ashby de la Zouch and other local business with provision of retail radios.

We will explore the use of new technology, resources and ideas to tackle crimes trends as they emerge. Over the next few years we will expand our resources to adapt to mobile working.

# Funding

---

We receive a mixture of funding from the Police and Crime Commissioner and the district council. This money is allocated to address the priorities set by the Community Safety Partnership Board. We plan the spending of this money against our action plan. The officers then have to account for the funds back to the Board.

# Equalities and diversity

---

We consider equalities and diversity during our planning cycle and in all our projects. We aim to support all victims equally and ensure that everyone can access the service. The Community Safety Team supports this process.

# Glossary

---

**ASB:** Anti-social behaviour

**CDRP:** Crime and Disorder Reduction Partnership

**CSP:** Community Safety Partnership

**JAG:** Joint Action Group

**NWL:** North West Leicestershire

**NWLDC:** North West Leicestershire District Council

**PCC:** Police and Crime Commissioner

**SNWP:** Safer North West Partnership

# Useful contacts

---

Police (emergency)	<b>999</b>	<b><a href="http://www.leics.police.uk">www.leics.police.uk</a></b>
Police (non-emergency)	<b>101</b>	<b><a href="http://www.leics.police.uk">www.leics.police.uk</a></b>
North West Leicestershire District Council	<b>01530 454545</b>	<b><a href="http://www.nwleics.gov.uk">www.nwleics.gov.uk</a></b>
Leicestershire Domestic Abuse Helpline	<b>0808 802 0028</b>	
Turning Point (substance misuse support)	<b>01530 275970</b>	<b><a href="http://www.swanswell.org">www.swanswell.org</a></b>
Leicestershire Fire and Rescue Service	<b>0116 2872241</b>	<b><a href="http://www.leicestershire-fire.gov.uk">www.leicestershire-fire.gov.uk</a></b>

For more information on this strategy, please contact North West Leicestershire District Council Community Safety at **[community.safety@nwleicestershire.gov.uk](mailto:community.safety@nwleicestershire.gov.uk)** or call **01530 454545**.